





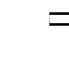
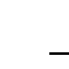














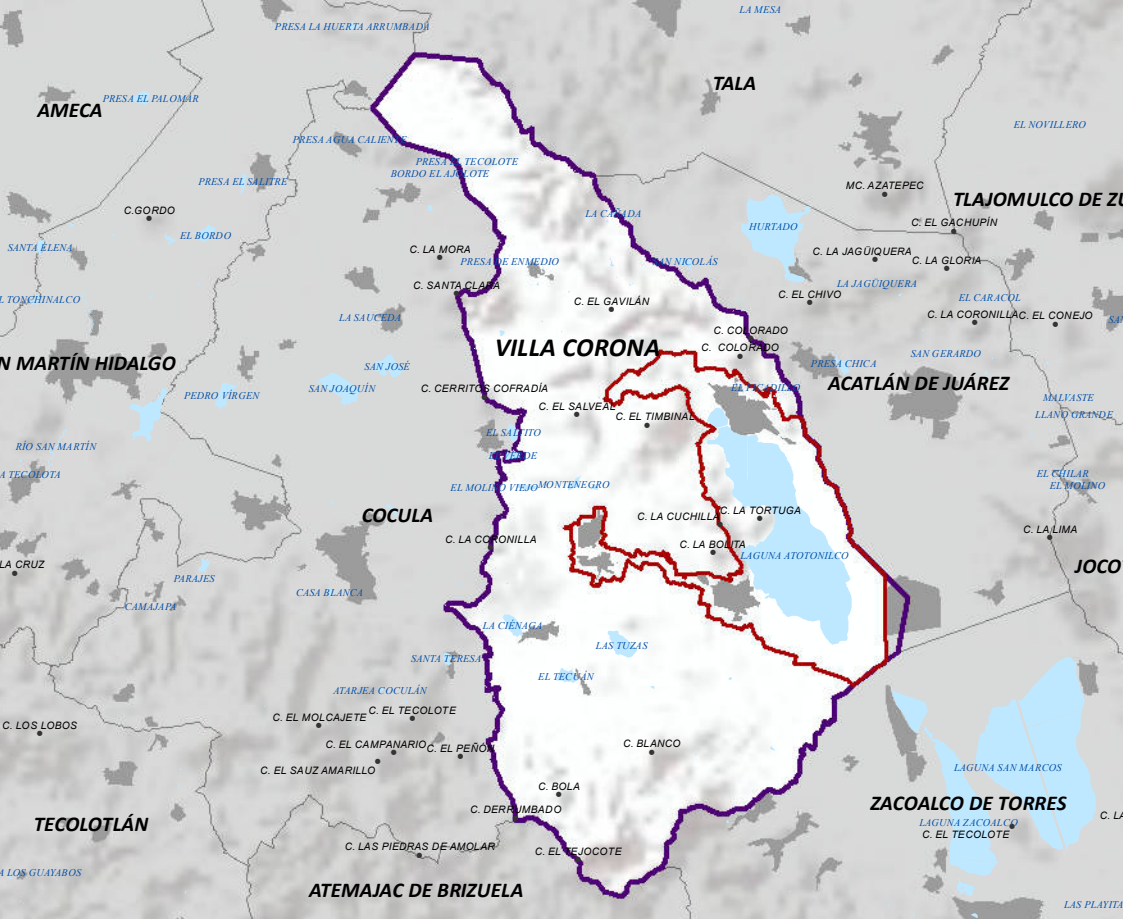
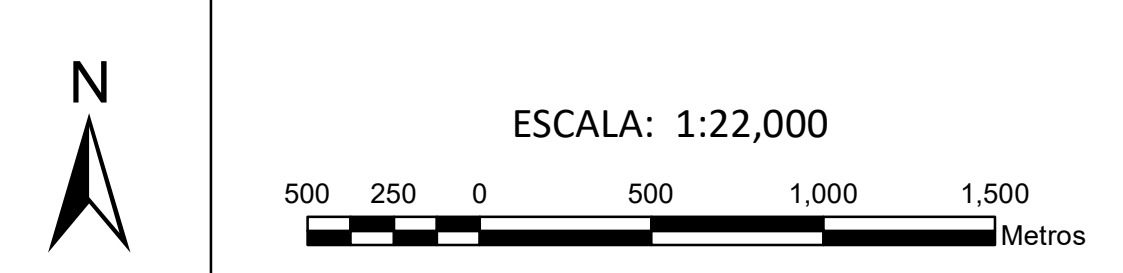
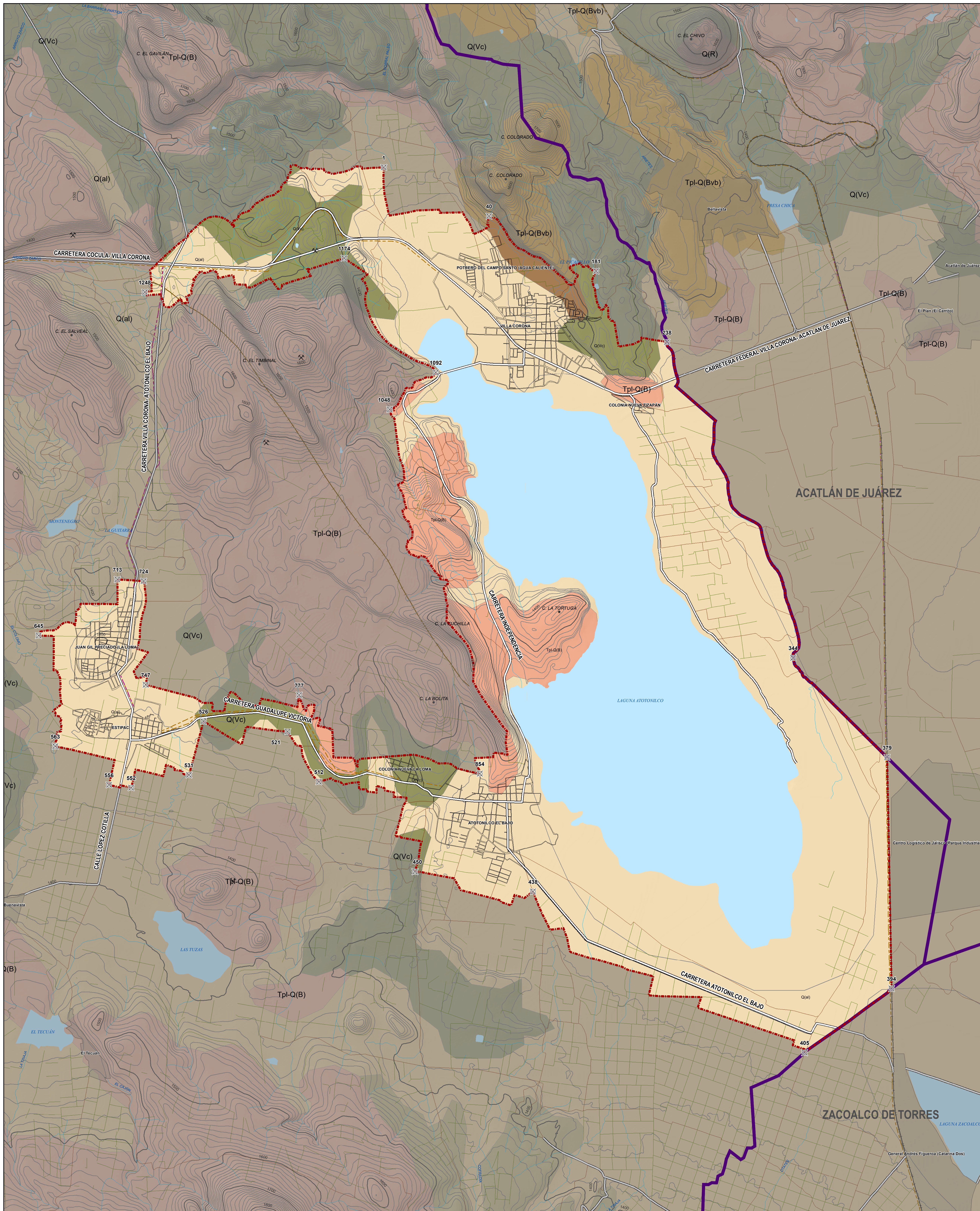
PLAN DE DESARROLLO URBANO
DE CENTRO DE POBLACIÓN
VILLA CORONA, JALISCO

D-04

GEOLOGÍA

SIMBOLOGÍA

| | |
|--|---|
|  Limite Municipal |  Línea telefónica |
|  Limite de centro de población |  Línea telegráfica |
| ASENTAMIENTOS HUMANOS | RASGOS NATURALES |
|  Traza urbana |  Escurrimientos |
|  Carreteras |  Curvas de nivel 100 m |
|  Vía férrea |  Curvas de nivel 10 m |
|  Caminos |  Cuerpos de agua |
|  Parcelas | |
| GEOLOGÍA | FALLAS GEOLÓGICAS |
|  Aluvial Q(al) |  Falla |
|  Basalto Tpl-Q(B) |  Fractura |
|  Brecha volcánica básica Tpl-Q(Bvb) | BANCOS DE MATERIAL |
|  Volcanoclástico Q(Vc) |  Bancos |



Fuente:
INEGI. Conjunto de datos vectoriales de información topográfica escala 1:50 000 serie III. 2015.
INEGI. Conjunto de datos vectoriales, Marco Geoestadístico. Junio 2018.
Modelo Digital Elevación a partir de El Continuo de Elevaciones Mexicano 3.0. INEGI 2013.
Projected Coordinate System: WGS_1984_UTM_Zone_13N